

MONTHLY MEMBERSHIP PROGRESS REPORT

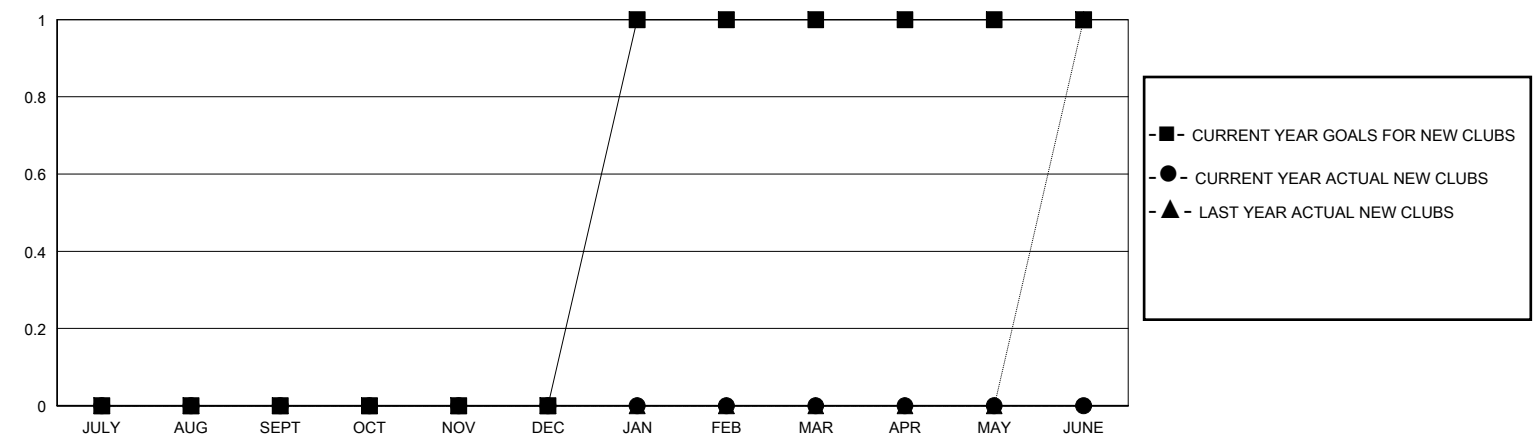
District 118 E

Results as of: 8/31/2025

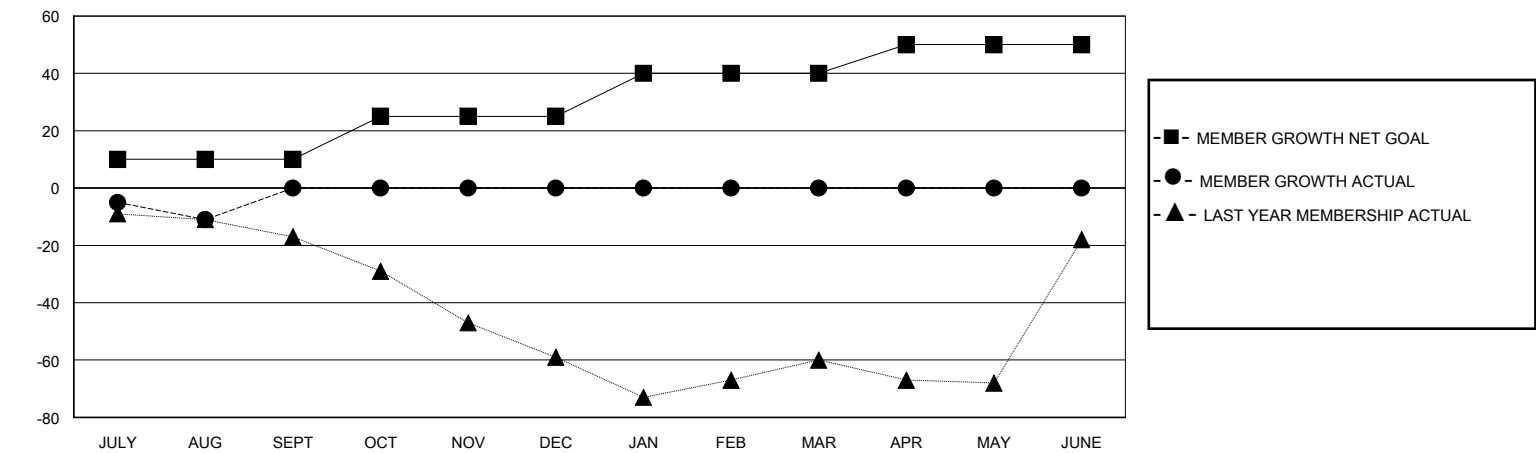
GMT: LOCATION Republic of Türkiye GMT CA

| Clubs | | | | Members | | | |
|-----------------------|---------------|-----------|---------------|-----------------------|------------------------|----------------------|--|
| RESULTS FOR 2025-2026 | | | | RESULTS FOR 2025-2026 | | | |
| QUARTER | NEW CLUB GOAL | NEW CLUBS | DROPPED CLUBS | QUARTER | MEMBER GROWTH NET GOAL | MEMBER GROWTH ACTUAL | DROPPED MEMBERS ACTUAL (including transfers) |
| JULY/AUG/SEPT | 0 | 0 | 2 | JULY/AUG/SEPT | 10 | 9 | 16 |
| OCT/NOV/DEC | 0 | 0 | 0 | OCT/NOV/DEC | 15 | 0 | 0 |
| JAN/FEB/MAR | 1 | 0 | 0 | JAN/FEB/MAR | 15 | 0 | 0 |
| APR/MAY/JUNE | 0 | 0 | 0 | APR/MAY/JUNE | 10 | 0 | 0 |

GOALS AND ACTUAL NEW CLUBS CUMULATIVE



GOALS AND ACTUAL MEMBERS CUMULATIVE



| | | | | |
|------------------------|----|---|------------------------------------|--------------|
| DROPPED CLUBS: 2 | | 4 CLUBS OF 44 ADDED 1 OR MORE NEW MEMBERS | <u>GENDER DISTRIBUTION</u> | |
| | | | MALE | 454 (48.09%) |
| | | | FEMALE | 490 (51.91%) |
| <u>DROPPED MEMBERS</u> | | CLICK HERE FOR CUMULATIVE MEMBERSHIP DATA | | |
| DECEASED | 1 | | TOTAL FAMILY UNIT MEMBERS 166 | |
| CLUB CANCELLED | 1 | | | |
| OTHER | 13 | | FAMILY MEMBERS PAYING HALF DUES 88 | |
| TOTAL | 15 | | | |